

## Longford Primary School Car park

Dear parents,

I am providing the information about how our car park is intended to be used to remind parents of expectations. I have spoken to the Wellington highway patrol who have suggested that I resend this information and they will be monitoring at pick up and drop off times over the next two weeks. It is important to know that breaches of the parking signs can result in a fine. I don't want that to be the result as the main reason for working on the car park is to ensure our students are safe as they get in and out of cars. The main issue is the flow of traffic around the bowl of the car park. Some vehicles are stopping for longer than five minutes in the drop off/pick up zone, which prevents other cars from dropping their children off. When cars are parked and unattended in this zone, other parents often have to reverse to exit the car park, which is the most dangerous part. There have been some recent near misses and I want to ensure all children are safe. Please remind yourself of the instructions attached to understand how to use the car park that will benefit all students and their parents.

If you would like to discuss this further or for further clarification, please contact me through the school office on 51497210.

Yours sincerely,

Joel Fraser

## Longford Primary School Car park

Earlier this year our school undertook a review of our car park and bus zone. After consultation with the Wellington Highway Patrol, we identified a number of areas that we could improve to increase the safety to students and families as they move in and out of the car park, both as pedestrians and drivers of vehicles. A major part of these safety changes were to separate the buses from all other traffic, while also separating the movement of pedestrians from the movement of vehicles. For these reasons, a series of bollards have been installed around the bowl of the car park to help separate vehicles from encroaching onto the footpath. A drop off and pick up zone between 8 - 9am and 3 - 4 pm has been clearly outlined in yellow, in diagram 1 below. Vehicles are able to stop to pick up/drop off students with an expectation of a five minute time limit. It is also a "No Parking" zone which means the driver must remain in their vehicle when in the zone. If you wish to leave your vehicle unattended, you are required to park in the regular car spaces marked in green below.

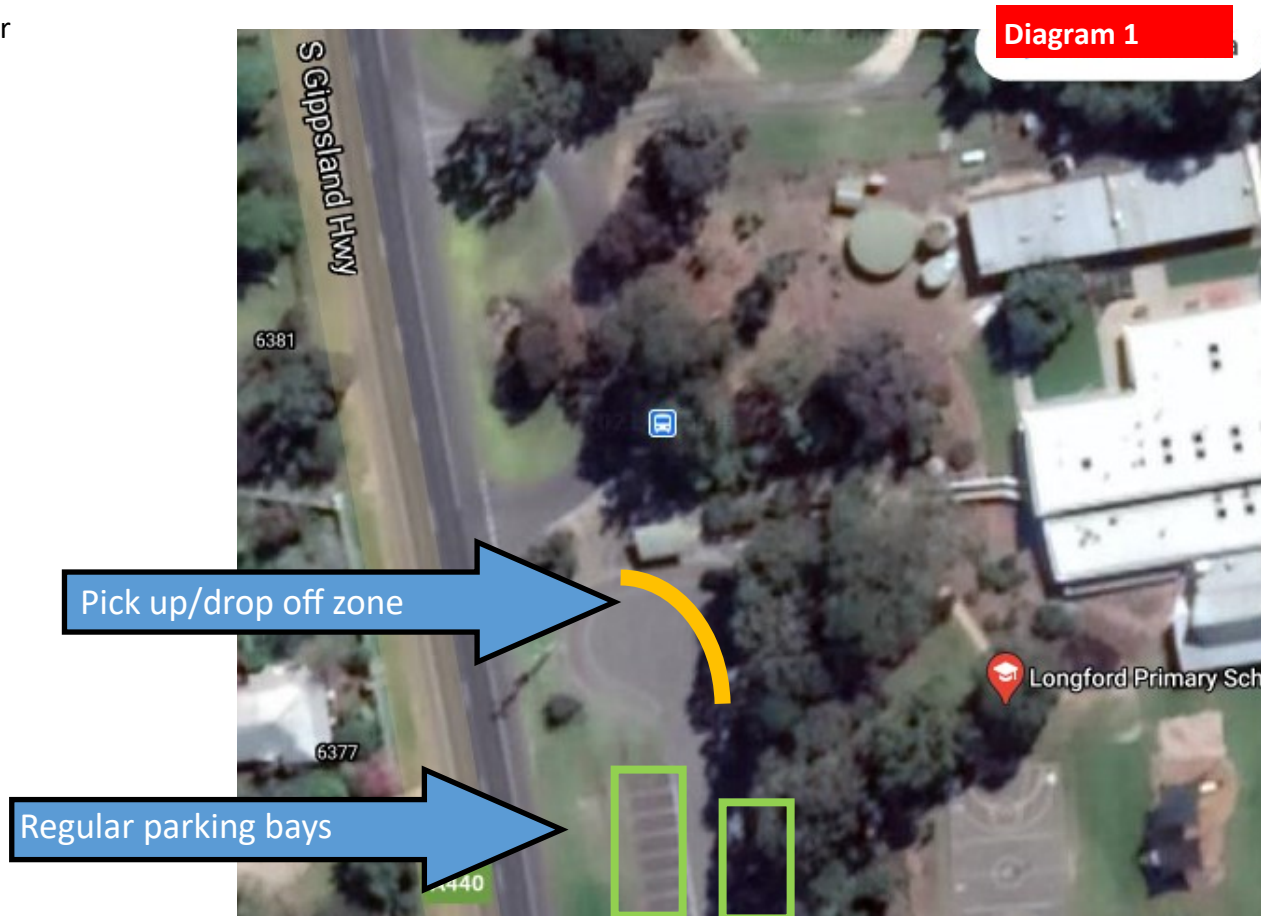
You will find further details on the following page regarding the bus zone and permit zone.

I have asked the Wellington Highway Patrol to monitor the carpark over the next few weeks to ensure everyone is following the rules.

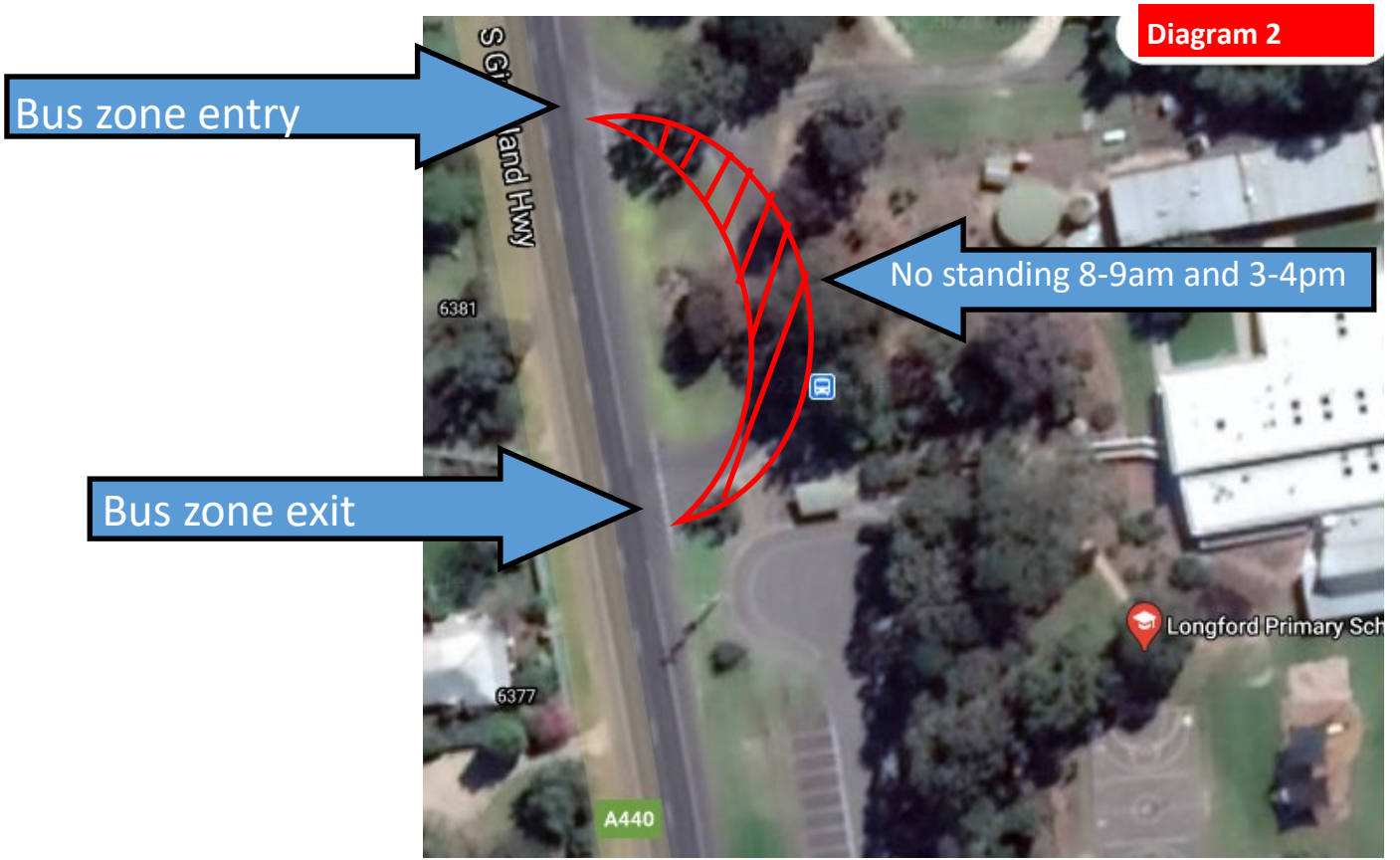
If you have any questions regarding the new arrangements, please contact me through the school office on 51497210.

Yours sincerely,

Joel Fraser  
Principal



A bus zone, combined with a **no standing zone** for other vehicles, has been created from 8-9am and 3-4pm to ensure buses have easy access to pick up and drop off students. During these times, vehicles are not permitted to stop in this area, either on the road or the grassed areas.



Reserved permit carparks have been allocated to families who access the Sale Specialist School bus. They are marked in red and are located inside the car park bowl

